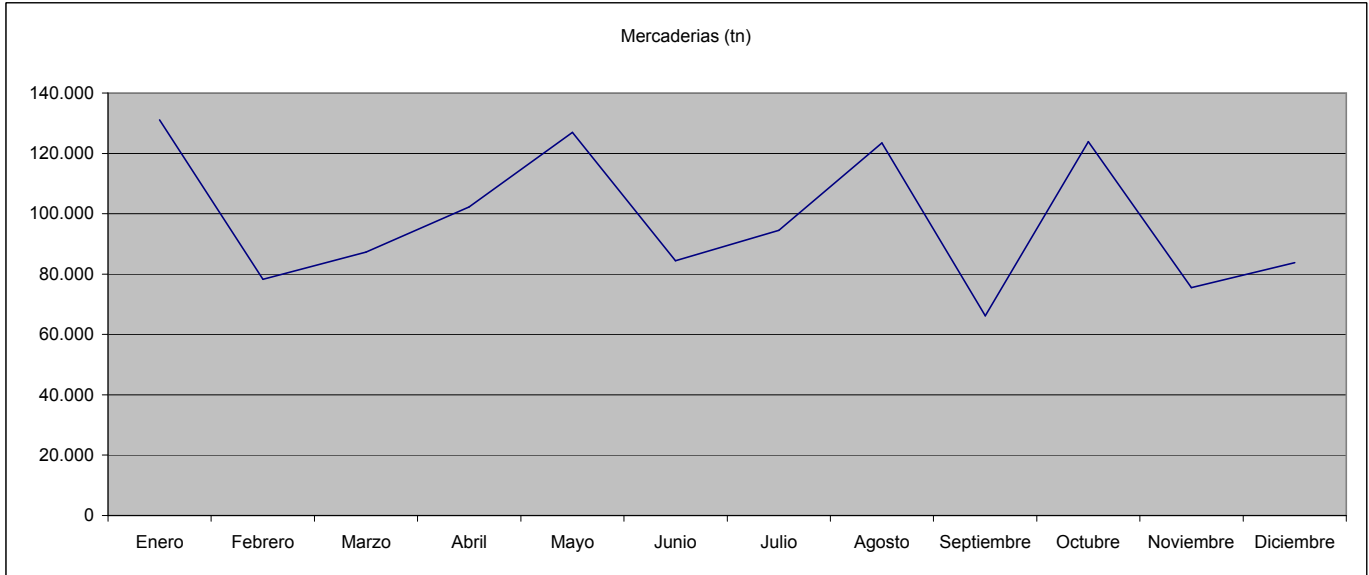


RESUMEN MOVIMIENTO DE MERCADERIAS AÑO 2007

| | Enero | Febrero | Marzo | Abril | Mayo | Junio | Julio | Agosto | Septiembre | Octubre | Noviembre | Diciembre | TOTAL |
|------------------|---------|---------|--------|---------|---------|--------|--------|---------|------------|---------|-----------|-----------|-----------|
| Mercaderias (tn) | 131.065 | 78.318 | 87.321 | 102.250 | 126.911 | 84.394 | 94.546 | 123.457 | 66.179 | 123.877 | 75.469 | 83.832 | 1.177.619 |
| Barcos | 57 | 65 | 85 | 70 | 79 | 73 | 119 | 87 | 63 | 69 | 45 | 43 | 855 |

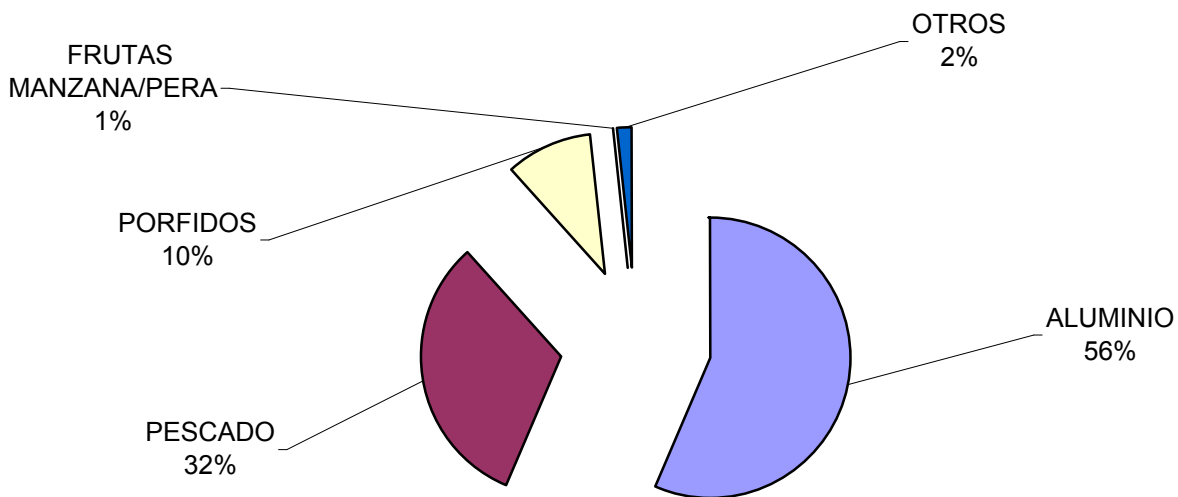


MOVIMIENTO MERCADERIAS 2007

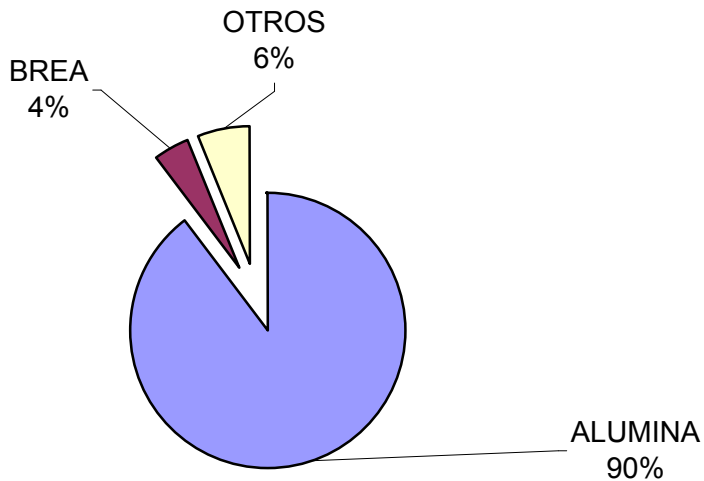
| MERCADERIA | EXPORTACION | IMPORTACION | REM.ENTRADO | REM.SALIDO | CONS.BUQUE |
|---------------------------|------------------|----------------|----------------|------------|---------------|
| ADOQUINES | 2.578 | 0 | 0 | 0 | 0 |
| ALGAS MARINAS | 0 | 25 | 0 | 0 | 0 |
| ALUMINA | 0 | 527.908 | 0 | 0 | 0 |
| ALUMINIO | 172.860 | 48 | 0 | 0 | 0 |
| APAREJOS | 0 | 0 | 0 | 0 | 0 |
| ARABIO DE ACERO | 0 | 23 | 0 | 0 | 0 |
| ARCILLA LINGOCHEL | 250 | 0 | 0 | 0 | 0 |
| BAÑO CRIOLITICO | 0 | 0 | 0 | 0 | 0 |
| BLOQUES CATODICOS | 0 | 1.421 | 0 | 0 | 0 |
| BREA | 0 | 25.000 | 0 | 0 | 0 |
| CALAMAR | 24.765 | 1.270 | 17.406 | 0 | 0 |
| CAOLIN PIEDRA | 1.479 | 0 | 0 | 0 | 0 |
| CARBONATO SODIO | 0 | 307 | 0 | 0 | 0 |
| CARNES COMESTIBLES | 136 | 42 | 0 | 0 | 0 |
| CATODOS A GRANEL | 0 | 787 | 0 | 0 | 0 |
| CEMENTO | 0 | 0 | 0 | 0 | 0 |
| CHANCHA HIERRO | 30 | 0 | 0 | 0 | 0 |
| COKE | 0 | 0 | 146.649 | 0 | 0 |
| COMBUSTIBLES | 0 | 0 | 365 | 0 | 42.913 |
| CUEROS y GRASA ANIMAL | 1.379 | 207 | 0 | 0 | 0 |
| DONACIONES INTERNAC. | 0 | 23 | 0 | 0 | 0 |
| FIBRA CERAMICA | 0 | 0 | 0 | 0 | 0 |
| FLUORURO DE ALUMINIO | 0 | 4.212 | 0 | 0 | 0 |
| FRUTAS - MANZANA/PERA | 0 | 0 | 0 | 0 | 0 |
| FRUTA DESHIDRATADA | 20 | 0 | 0 | 0 | 0 |
| INSUMOS | 0 | 6.326 | 0 | 0 | 0 |
| LANA | 1.552 | 414 | 0 | 0 | 0 |
| LANGOSTINOS | 22.881 | 41 | 3.513 | 0 | 0 |
| LIGA DE ALUMINIO | 0 | 243 | 0 | 0 | 0 |
| MAGNESIO | 0 | 1.930 | 0 | 0 | 0 |
| MAQUINAS Y APARATOS | 366 | 1.128 | 0 | 0 | 0 |
| MATERIAL EMPAQUE | 0 | 133 | 0 | 0 | 0 |
| MATERIAL REFRACTARIO | 0 | 3.120 | 0 | 0 | 0 |
| MERCADERIA GENERAL | 5 | 2.805 | 0 | 0 | 0 |
| MERLUZA | 18.256 | 0 | 27.986 | 0 | 0 |
| PERTRECHOS | 0 | 288 | 0 | 0 | 0 |
| PESCADOS MARISCOS MOLUS. | 31.775 | 0 | 44.225 | 0 | 41 |
| PORFIDOS | 27.747 | 0 | 0 | 0 | 0 |
| PRODUCTOS QUIMICOS | 0 | 63 | 0 | 0 | 0 |
| REPUESTOS | 2 | 470 | 0 | 0 | 0 |
| SILICIO METALICO | 0 | 5.037 | 0 | 0 | 0 |
| SODIO CARBONADO | 0 | 112 | 0 | 0 | 0 |
| VEHICULOS y EMBARCACIONES | 0 | 0 | 0 | 0 | 0 |
| ZAPALLO | 0 | 0 | 0 | 0 | 0 |
| ZINC | 0 | 602 | 0 | 0 | 0 |
| MIEL | 0 | 0 | 0 | 0 | 0 |
| ACERO | 97 | 4.358 | 0 | 0 | 0 |
| TOTAL TONELADAS | 306.178 | 588.343 | 240.144 | 0 | 42.954 |
| TONELADAS MOVIDAS | 1.177.619 | | | | |
| TOTAL BARCOS | 855 | | | | |

| EXPORTACION | |
|-----------------------|---------|
| ALUMINIO | 172.860 |
| PESCADO | 97.677 |
| PORFIDOS | 30.325 |
| FRUTAS - MANZANA/PERA | 0 |
| FRUTA DEHIDRATADA | 20 |
| ZAPALLO | 0 |

| IMPORTACION | |
|-------------|---------|
| ALUMINA | 527.908 |
| BREA | 25.000 |
| OTROS | 35.435 |



EXPORTACION



IMPORTACION

Ene-07

| MERCADERIA | EXPORTACION | IMPORTACION | REM.ENTRADO | REM.SALIDO | CONS.BUQUE |
|----------------------------|----------------|---------------|---------------|------------|--------------|
| ADOQUINES | 0 | 0 | 0 | 0 | 0 |
| ALGAS MARINAS | 0 | 0 | 0 | 0 | 0 |
| ALUMINA | 0 | 66.850 | 0 | 0 | 0 |
| ALUMINIO | 35.912 | 0 | 0 | 0 | 0 |
| APAREJOS | 0 | 0 | 0 | 0 | 0 |
| ARABIO DE ACERO | 0 | 0 | 0 | 0 | 0 |
| ARCILLA LINGOCHEL | 250 | 0 | 0 | 0 | 0 |
| BAÑO CRIOLITICO | 0 | 0 | 0 | 0 | 0 |
| BLOQUES CATODICOS | 0 | 267 | 0 | 0 | 0 |
| BREA | 0 | 0 | 0 | 0 | 0 |
| CALAMAR | 536 | 0 | 0 | 0 | 0 |
| CAOLIN PIEDRA | 0 | 0 | 0 | 0 | 0 |
| CARBONATO SODIO | 0 | 0 | 0 | 0 | 0 |
| CARNES COMESTIBLES | 26 | 0 | 0 | 0 | 0 |
| CATODOS A GRANEL | 0 | 0 | 0 | 0 | 0 |
| CEMENTO | 0 | 0 | 0 | 0 | 0 |
| CHANCHA HIERRO | 0 | 0 | 0 | 0 | 0 |
| COKE | 0 | 0 | 5.779 | 0 | 0 |
| COMBUSTIBLES | 0 | 0 | 0 | 0 | 3.343 |
| CUERO, PELO Y GRASA ANIMAL | 23 | 20 | 0 | 0 | 0 |
| DONACIONES INTERNAC. | 0 | 23 | 0 | 0 | 0 |
| FIBRA CERAMICA | 0 | 0 | 0 | 0 | 0 |
| FLUORURO DE ALUMINIO | 0 | 211 | 0 | 0 | 0 |
| FRUTAS - MANZANA/PERA | 0 | 0 | 0 | 0 | 0 |
| FRUTA DESHIDRATADA | 0 | 0 | 0 | 0 | 0 |
| INSUMOS | 0 | 1.007 | 0 | 0 | 0 |
| LANA | 95 | 0 | 0 | 0 | 0 |
| LANGOSTINOS | 1.693 | 0 | 0 | 0 | 0 |
| LIGA DE ALUMINIO | 0 | 22 | 0 | 0 | 0 |
| MAGNESIO | 0 | 0 | 0 | 0 | 0 |
| MAQUINAS Y APARATOS | 0 | 198 | 0 | 0 | 0 |
| MATERIAL EMPAQUE | 0 | 0 | 0 | 0 | 0 |
| MATERIAL REFRACTARIO | 0 | 414 | 0 | 0 | 0 |
| MERCADERIA GENERAL | 0 | 28 | 0 | 0 | 0 |
| MERLUZA | 450 | 0 | 1.978 | 0 | 0 |
| PERTRECHOS | 0 | 0 | 0 | 0 | 0 |
| PESCADOS MARISCOS MOLUS. | 3.906 | 0 | 3.472 | 0 | 0 |
| PORFIDOS | 1.126 | 0 | 0 | 0 | 0 |
| PRODUCTOS QUIMICOS | 0 | 21 | 0 | 0 | 0 |
| REPUESTOS | 0 | 0 | 0 | 0 | 0 |
| SILICIO METALICO | 0 | 1.304 | 0 | 0 | 0 |
| SODIO CARBONADO | 0 | 0 | 0 | 0 | 0 |
| VEHICULOS y EMBARCACIONES | 0 | 0 | 0 | 0 | 0 |
| ZAPALLO | 0 | 0 | 0 | 0 | 0 |
| ZINC | 0 | 0 | 0 | 0 | 0 |
| MIEL | 0 | 0 | 0 | 0 | 0 |
| ACERO | 0 | 2.111 | 0 | 0 | 0 |
| TOTAL TONELADAS | 44.017 | 72.476 | 11.229 | 0 | 3.343 |
| TONELADAS MOVIDAS | 131.065 | | | | |
| TOTAL BARCOS | 57 | | | | |

| EXPORTACION | |
|-----------------------|--------|
| ALUMINIO | 35.912 |
| PESCADO | 6.585 |
| PORFIDOS | 1.126 |
| FRUTAS - MANZANA/PERA | 0 |
| FRUTA DEHIDRATADA | 0 |
| ZAPALLO | 0 |
| OTROS | 394 |

| IMPORTACION | |
|-------------|--------|
| ALUMINA | 66.850 |
| BREA | 0 |
| OTROS | 5.626 |

Feb-07

| MERCADERIA | EXPORTACION | IMPORTACION | REM.ENTRADO | REM.SALIDO | CONS.BUQUE |
|----------------------------|---------------|---------------|---------------|------------|--------------|
| ADOQUINES | 83 | | | | |
| ALGAS MARINAS | | | | | |
| ALUMINA | | 36.553 | | | |
| ALUMINIO | 14.175 | | | | |
| APAREJOS | | | | | |
| ARABIO DE ACERO | | | | | |
| ARCILLA LINGOCHEL | | | | | |
| BAÑO CRIOLITICO | | | | | |
| BLOQUES CATODICOS | | | | | |
| BREA | | | | | |
| CALAMAR | 469 | | | | |
| CAOLIN PIEDRA | | | | | |
| CARBONATO SODIO | | | | | |
| CARNES COMESTIBLES | 43 | | | | |
| CATODOS A GRANEL | | | | | |
| CEMENTO | | | | | |
| CHANCHA HIERRO | | | | | |
| COKE | | | 11.625 | | |
| COMBUSTIBLES | | | | | 1.340 |
| CUERO, PELO Y GRASA ANIMAL | 57 | | | | |
| DONACIONES INTERNAC. | | | | | |
| FIBRA CERAMICA | | | | | |
| FLUORURO DE ALUMINIO | | | | | |
| FRUTAS - MANZANA/PERA | | | | | |
| FRUTA DESHIDRATADA | | | | | |
| INSUMOS | | 475 | | | |
| LANA | 39 | 19 | | | |
| LANGOSTINOS | 1.956 | | | | |
| LIGA DE ALUMINIO | | 78 | | | |
| MAGNESIO | | | | | |
| MAQUINAS Y APARATOS | 76 | 20 | | | |
| MATERIAL EMPAQUE | | 17 | | | |
| MATERIAL REFRACTARIO | | 421 | | | |
| MERCADERIA GENERAL | | | | | |
| MERLUZA | 1.540 | | 2.502 | | |
| PERTRECHOS | | 97 | | | |
| PESCADOS MARISCOS MOLUS. | 2.135 | | 2.723 | | |
| PORFIDOS | 1.145 | | | | |
| PRODUCTOS QUIMICOS | | | | | |
| REPUESTOS | | 386 | | | |
| SILICIO METALICO | | 301 | | | |
| SODIO CARBONADO | | | | | |
| VEHICULOS y EMBARCACIONES | | | | | |
| ZAPALLO | | | | | |
| ZINC | | | | | |
| MIEL | | | | | |
| ACERO | | 43 | | | |
| TOTAL TONELADAS | 21.718 | 38.410 | 16.850 | 0 | 1.340 |
| TONELADAS MOVIDAS | 78.318 | | | | |
| TOTAL BARCOS | 65 | | | | |

| EXPORTACION | |
|-----------------------|--------|
| ALUMINIO | 14.175 |
| PESCADO | 6.100 |
| PORFIDOS | 1.228 |
| FRUTAS - MANZANA/PERA | 0 |
| FRUTA DEHIDRATADA | 0 |
| ZAPALLO | 0 |
| OTROS | 215 |

| IMPORTACION | |
|-------------|--------|
| ALUMINA | 36.553 |
| BREA | 0 |
| OTROS | 1.857 |

Mar-07

| MERCADERIA | EXPORTACION | IMPORTACION | REM.ENTRADO | REM.SALIDO | CONS.BUQUE |
|----------------------------|---------------|---------------|---------------|------------|--------------|
| ADOQUINES | | | | | |
| ALGAS MARINAS | | | | | |
| ALUMINA | | 31.580 | | | |
| ALUMINIO | 10.331 | | | | |
| APAREJOS | | | | | |
| ARABIO DE ACERO | | | | | |
| ARCILLA LINGOCHEL | | | | | |
| BAÑO CRIOLITICO | | | | | |
| BLOQUES CATODICOS | | | | | |
| BREA | | | | | |
| CALAMAR | 980 | 1.216 | 3.948 | | |
| CAOLIN PIEDRA | | | | | |
| CARBONATO SODIO | | 204 | | | |
| CARNES COMESTIBLES | | | | | |
| CATODOS A GRANEL | | | | | |
| CEMENTO | | | | | |
| CHANCHA HIERRO | 30 | | | | |
| COKE | | | 11.573 | | |
| COMBUSTIBLES | | | | | 6.493 |
| CUERO, PELO Y GRASA ANIMAL | 147 | 37 | | | |
| DONACIONES INTERNAC. | | | | | |
| FIBRA CERAMICA | | | | | |
| FLUORURO DE ALUMINIO | | | | | |
| FRUTAS - MANZANA/PERA | | | | | |
| FRUTA DESHIDRATADA | | | | | |
| INSUMOS | | 388 | | | |
| LANA | 78 | 19 | | | |
| LANGOSTINOS | 776 | | 60 | | |
| LIGA DE ALUMINIO | | 21 | | | |
| MAGNESIO | | | | | |
| MAQUINAS Y APARATOS | 167 | 9 | | | |
| MATERIAL EMPAQUE | | 4 | | | |
| MATERIAL REFRACTARIO | | 200 | | | |
| MERCADERIA GENERAL | | 2.583 | | | |
| MERLUZA | 1.326 | | 3.965 | | |
| PERTRECHOS | | 51 | | | |
| PESCADOS MARISCOS MOLUS. | 2.028 | | 5.844 | | |
| PORFIDOS | 1.681 | | | | |
| PRODUCTOS QUIMICOS | | | | | |
| REPUESTOS | | 9 | | | |
| SILICIO METALICO | | 301 | | | |
| SODIO CARBONADO | | | | | |
| VEHICULOS y EMBARCACIONES | | | | | |
| ZAPALLO | | | | | |
| ZINC | | | | | |
| MIEL | | | | | |
| ACERO | 97 | 1.175 | | | |
| TOTAL TONELADAS | 17.641 | 37.797 | 25.390 | 0 | 6.493 |
| TONELADAS MOVIDAS | 87.321 | | | | |
| TOTAL BARCOS | 85 | | | | |

| EXPORTACION | |
|-----------------------|--------|
| ALUMINIO | 10.331 |
| PESCADO | 5.110 |
| PORFIDOS | 1.681 |
| FRUTAS - MANZANA/PERA | 0 |
| FRUTA DEHIDRATADA | 0 |
| ZAPALLO | 0 |
| OTROS | 519 |

| IMPORTACION | |
|-------------|--------|
| ALUMINA | 31.580 |
| BREA | 0 |
| OTROS | 6.217 |

Abr-07

| MERCADERIA | EXPORTACION | IMPORTACION | REM.ENTRADO | REM.SALIDO | CONS.BUQUE |
|----------------------------|----------------|---------------|---------------|------------|--------------|
| ADOQUINES | 112 | | | | |
| ALGAS MARINAS | | | | | |
| ALUMINA | | 28.023 | | | |
| ALUMINIO | 14.429 | | | | |
| APAREJOS | | | | | |
| ARABIO DE ACERO | | | | | |
| ARCILLA LINGOCHEL | | | | | |
| BAÑO CRIOLITICO | | | | | |
| BLOQUES CATODICOS | | | | | |
| BREA | | 5.000 | | | |
| CALAMAR | 7.120 | | 4.460 | | |
| CAOLIN PIEDRA | 301 | | | | |
| CARBONATO SODIO | | | | | |
| CARNES COMESTIBLES | 41 | | | | |
| CATODOS A GRANEL | | | | | |
| CEMENTO | | | | | |
| CHANCHA HIERRO | | | | | |
| COKE | | | 18.674 | | |
| COMBUSTIBLES | | | | | 3.198 |
| CUERO, PELO Y GRASA ANIMAL | 173 | 20 | | | |
| DONACIONES INTERNAC. | | | | | |
| FIBRA CERAMICA | | | | | |
| FLUORURO DE ALUMINIO | | | | | |
| FRUTAS - MANZANA/PERA | | | | | |
| FRUTA DESHIDRATADA | | | | | |
| INSUMOS | | 1.822 | | | |
| LANA | 226 | | | | |
| LANGOSTINOS | 2.066 | | 258 | | |
| LIGA DE ALUMINIO | | | | | |
| MAGNESIO | | 1.470 | | | |
| MAQUINAS Y APARATOS | | 205 | | | |
| MATERIAL EMPAQUE | | | | | |
| MATERIAL REFRACTARIO | | 113 | | | |
| MERCADERIA GENERAL | | 16 | | | |
| MERLUZA | 3.715 | | 1.152 | | |
| PERTRECHOS | | | | | |
| PESCADOS MARISCOS MOLUS. | 3.083 | | 4.434 | | |
| PORFIDOS | 1.360 | | | | |
| PRODUCTOS QUIMICOS | | | | | |
| REPUESTOS | 2 | | | | |
| SILICIO METALICO | | 301 | | | |
| SODIO CARBONADO | | | | | |
| VEHICULOS y EMBARCACIONES | | | | | |
| ZAPALLO | | | | | |
| ZINC | | 401 | | | |
| MIEL | | | | | |
| ACERO | | 75 | | | |
| TOTAL TONELADAS | 32.628 | 37.446 | 28.978 | | 3.198 |
| TONELADAS MOVIDAS | 102.250 | | | | |
| TOTAL BARCOS | 70 | | | | |

| EXPORTACION | |
|-----------------------|--------|
| ALUMINIO | 14.429 |
| PESCADO | 15.984 |
| PORFIDOS | 1.472 |
| FRUTAS - MANZANA/PERA | 0 |
| FRUTA DEHIDRATADA | 0 |
| ZAPALLO | 0 |
| OTROS | 743 |

| IMPORTACION | |
|-------------|--------|
| ALUMINA | 28.023 |
| BREA | 5.000 |
| OTROS | 4.423 |

May-07

| MERCADERIA | EXPORTACION | IMPORTACION | REM.ENTRADO | REM.SALIDO | CONS.BUQUE |
|----------------------------|----------------|---------------|---------------|------------|--------------|
| ADOQUINES | 250 | | | | |
| ALGAS MARINAS | | | | | |
| ALUMINA | | 66.334 | | | |
| ALUMINIO | 9.623 | | | | |
| APAREJOS | | | | | |
| ARABIO DE ACERO | | | | | |
| ARCILLA LINGOCHEL | | | | | |
| BAÑO CRIOLITICO | | | | | |
| BLOQUES CATODICOS | | | | | |
| BREA | | | | | |
| CALAMAR | 3.911 | | 4.881 | | |
| CAOLIN PIEDRA | 326 | | | | |
| CARBONATO SODIO | | | | | |
| CARNES COMESTIBLES | | | | | |
| CATODOS A GRANEL | | 245 | | | |
| CEMENTO | | | | | |
| CHANCHA HIERRO | | | | | |
| COKE | | | 15.927 | | |
| COMBUSTIBLES | | | | | 5.477 |
| CUERO, PELO Y GRASA ANIMAL | 39 | 45 | | | |
| DONACIONES INTERNAC. | | | | | |
| FIBRA CERAMICA | | | | | |
| FLUORURO DE ALUMINIO | | 549 | | | |
| FRUTAS - MANZANA/PERA | | | | | |
| FRUTA DESHIDRATADA | | | | | |
| INSUMOS | | 225 | | | |
| LANA | 39 | 11 | | | |
| LANGOSTINOS | 2.122 | | 240 | | |
| LIGA DE ALUMINIO | | 26 | | | |
| MAGNESIO | | | | | |
| MAQUINAS Y APARATOS | | 117 | | | |
| MATERIAL EMPAQUE | | 31 | | | |
| MATERIAL REFRACTARIO | | 398 | | | |
| MERCADERIA GENERAL | | 41 | | | |
| MERLUZA | 2.325 | | 3.244 | | |
| PERTRECHOS | | | | | |
| PESCADOS MARISCOS MOLUS. | 2.830 | | 4.313 | | |
| PORFIDOS | 3.335 | | | | |
| PRODUCTOS QUIMICOS | | | | | |
| REPUESTOS | | 7 | | | |
| SILICIO METALICO | | | | | |
| SODIO CARBONADO | | | | | |
| VEHICULOS y EMBARCACIONES | | | | | |
| ZAPALLO | | | | | |
| ZINC | | | | | |
| MIEL | | | | | |
| ACERO | | | | | |
| TOTAL TONELADAS | 24.800 | 68.029 | 28.605 | | 5.477 |
| TONELADAS MOVIDAS | 126.911 | | | | |
| TOTAL BARCOS | 79 | | | | |

| EXPORTACION | |
|-----------------------|--------|
| ALUMINIO | 9.623 |
| PESCADO | 11.188 |
| PORFIDOS | 3.585 |
| FRUTAS - MANZANA/PERA | 0 |
| FRUTA DEHIDRATADA | 0 |
| ZAPALLO | 0 |
| OTROS | 404 |

| IMPORTACION | |
|-------------|--------|
| ALUMINA | 66.334 |
| BREA | 0 |
| OTROS | 1.695 |

Jun-07

| MERCADERIA | EXPORTACION | IMPORTACION | REM.ENTRADO | REM.SALIDO | CONS.BUQUE |
|----------------------------|---------------|---------------|--------------|------------|--------------|
| ADOQUINES | 493 | | | | |
| ALGAS MARINAS | | 25 | | | |
| ALUMINA | | 33.258 | | | |
| ALUMINIO | 13.234 | | | | |
| APAREJOS | | | | | |
| ARABIO DE ACERO | | 23 | | | |
| ARCILLA LINGOCHEL | | | | | |
| BAÑO CRIOLITICO | | | | | |
| BLOQUES CATODICOS | | | | | |
| BREA | | 5.000 | | | |
| CALAMAR | 3.924 | 27 | 2.898 | | |
| CAOLIN PIEDRA | | | | | |
| CARBONATO SODIO | | | | | |
| CARNES COMESTIBLES | | | | | |
| CATODOS A GRANEL | | 88 | | | |
| CEMENTO | | | | | |
| CHANCHA HIERRO | | | | | |
| COKE | | | | | |
| COMBUSTIBLES | | | | | 3.633 |
| CUERO, PELO Y GRASA ANIMAL | 181 | | | | |
| DONACIONES INTERNAC. | | | | | |
| FIBRA CERAMICA | | | | | |
| FLUORURO DE ALUMINIO | | 275 | | | |
| FRUTAS - MANZANA/PERA | | | | | |
| FRUTA DESHIDRATADA | | | | | |
| INSUMOS | | 464 | | | |
| LANA | 164 | | | | |
| LANGOSTINOS | 1.367 | | 264 | | |
| LIGA DE ALUMINIO | | | | | |
| MAGNESIO | | | | | |
| MAQUINAS Y APARATOS | | 80 | | | |
| MATERIAL EMPAQUE | | 16 | | | |
| MATERIAL REFRACTARIO | | 311 | | | |
| MERCADERIA GENERAL | | | | | |
| MERLUZA | 2.029 | | 3.112 | | |
| PERTRECHOS | | 59 | | | |
| PESCADOS MARISCOS MOLUS. | 4.280 | | 3.185 | | |
| PORFIDOS | 4.617 | | | | |
| PRODUCTOS QUIMICOS | | 21 | | | |
| REPUESTOS | | 27 | | | |
| SILICIO METALICO | | 852 | | | |
| SODIO CARBONADO | | | | | |
| VEHICULOS y EMBARCACIONES | | | | | |
| ZAPALLO | | | | | |
| ZINC | | 201 | | | |
| MIEL | | | | | |
| ACERO | | 286 | | | |
| TOTAL TONELADAS | 30.289 | 41.013 | 9.459 | | 3.633 |
| TONELADAS MOVIDAS | 84.394 | | | | |
| TOTAL BARCOS | 73 | | | | |

| EXPORTACION | |
|-----------------------|--------|
| ALUMINIO | 13.234 |
| PESCADO | 11.600 |
| PORFIDOS | 5.110 |
| FRUTAS - MANZANA/PERA | 0 |
| FRUTA DEHIDRATADA | 0 |
| ZAPALLO | 0 |
| OTROS | 345 |

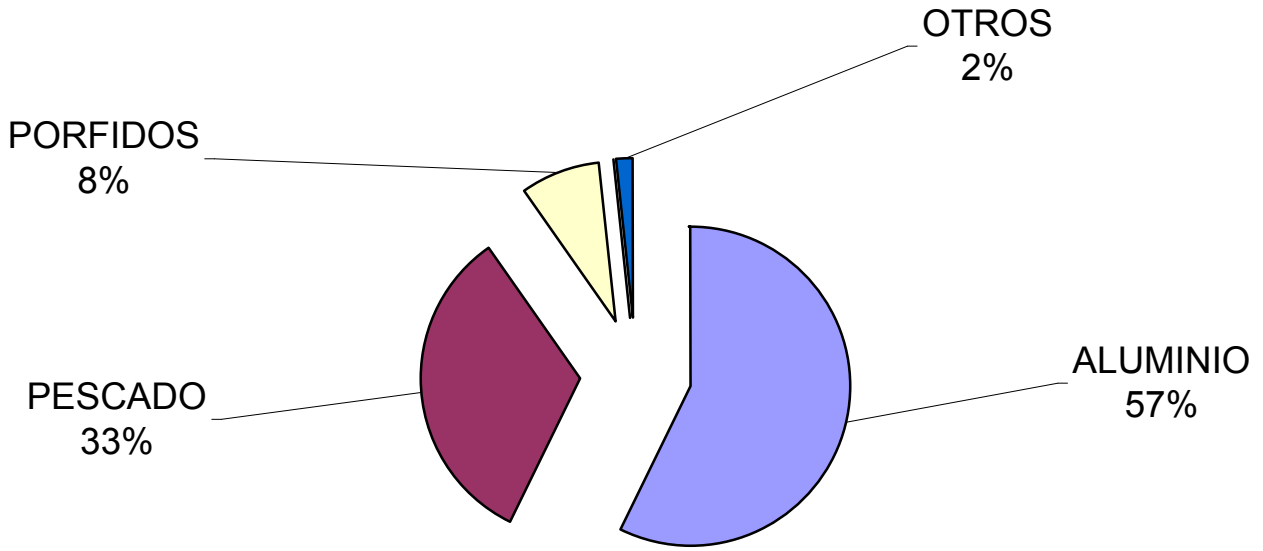
| IMPORTACION | |
|-------------|--------|
| ALUMINA | 33.258 |
| BREA | 5.000 |
| OTROS | 2.755 |

Subtotal - 1er. Semestre 2007

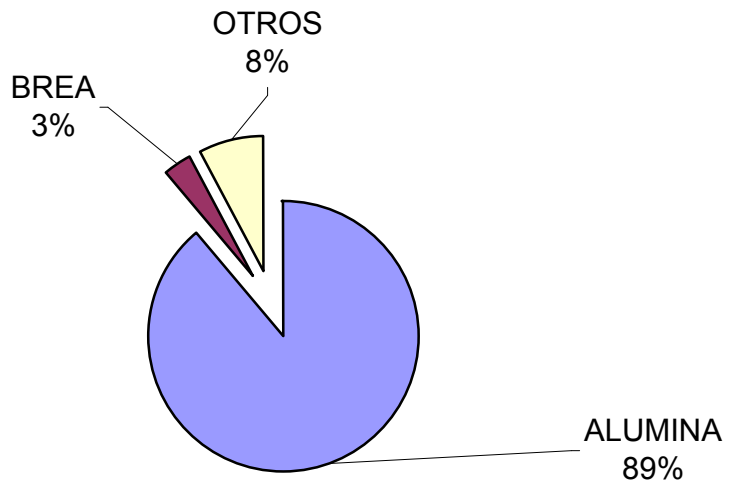
| MERCADERIA | EXPORTACION | IMPORTACION | REM.ENTRADO | REM.SALIDO | CONS.BUQUE |
|---------------------------|----------------|----------------|----------------|------------|---------------|
| ADOQUINES | 938 | 0 | 0 | 0 | 0 |
| ALGAS MARINAS | 0 | 25 | 0 | 0 | 0 |
| ALUMINA | 0 | 262.598 | 0 | 0 | 0 |
| ALUMINIO | 97.704 | 0 | 0 | 0 | 0 |
| APAREJOS | 0 | 0 | 0 | 0 | 0 |
| ARABIO DE ACERO | 0 | 23 | 0 | 0 | 0 |
| ARCILLA LINGOCHEL | 250 | 0 | 0 | 0 | 0 |
| BAÑO CRIOLITICO | 0 | 0 | 0 | 0 | 0 |
| BLOQUES CATODICOS | 0 | 267 | 0 | 0 | 0 |
| BREA | 0 | 10.000 | 0 | 0 | 0 |
| CALAMAR | 16.940 | 1.243 | 16.187 | 0 | 0 |
| CAOLIN PIEDRA | 627 | 0 | 0 | 0 | 0 |
| CARBONATO SODIO | 0 | 204 | 0 | 0 | 0 |
| CARNES COMESTIBLES | 110 | 0 | 0 | 0 | 0 |
| CATODOS A GRANEL | 0 | 333 | 0 | 0 | 0 |
| CEMENTO | 0 | 0 | 0 | 0 | 0 |
| CHANCHA HIERRO | 30 | 0 | 0 | 0 | 0 |
| COKE | 0 | 0 | 63.578 | 0 | 0 |
| COMBUSTIBLES | 0 | 0 | 0 | 0 | 23.484 |
| CUEROS y GRASA ANIMAL | 620 | 122 | 0 | 0 | 0 |
| DONACIONES INTERNAC. | 0 | 23 | 0 | 0 | 0 |
| FIBRA CERAMICA | 0 | 0 | 0 | 0 | 0 |
| FLUORURO DE ALUMINIO | 0 | 1.035 | 0 | 0 | 0 |
| FRUTAS - MANZANA/PERA | 0 | 0 | 0 | 0 | 0 |
| FRUTA DESHIDRATADA | 0 | 0 | 0 | 0 | 0 |
| INSUMOS | 0 | 4.381 | 0 | 0 | 0 |
| LANA | 641 | 49 | 0 | 0 | 0 |
| LANGOSTINOS | 9.980 | 0 | 822 | 0 | 0 |
| LIGA DE ALUMINIO | 0 | 147 | 0 | 0 | 0 |
| MAGNESIO | 0 | 1.470 | 0 | 0 | 0 |
| MAQUINAS Y APARATOS | 243 | 629 | 0 | 0 | 0 |
| MATERIAL EMPAQUE | 0 | 68 | 0 | 0 | 0 |
| MATERIAL REFRACTARIO | 0 | 1.857 | 0 | 0 | 0 |
| MERCADERIA GENERAL | 0 | 2.668 | 0 | 0 | 0 |
| MERLUZA | 11.385 | 0 | 15.953 | 0 | 0 |
| PERTRECHOS | 0 | 207 | 0 | 0 | 0 |
| PESCADOS MARISCOS MOLUS. | 18.262 | 0 | 23.971 | 0 | 0 |
| PORFIDOS | 13.264 | 0 | 0 | 0 | 0 |
| PRODUCTOS QUIMICOS | 0 | 42 | 0 | 0 | 0 |
| REPUESTOS | 2 | 429 | 0 | 0 | 0 |
| SILICIO METALICO | 0 | 3.059 | 0 | 0 | 0 |
| SODIO CARBONADO | 0 | 0 | 0 | 0 | 0 |
| VEHICULOS y EMBARCACIONES | 0 | 0 | 0 | 0 | 0 |
| ZAPALLO | 0 | 0 | 0 | 0 | 0 |
| ZINC | 0 | 602 | 0 | 0 | 0 |
| MIEL | 0 | 0 | 0 | 0 | 0 |
| ACERO | 97 | 3.690 | 0 | 0 | 0 |
| TOTAL TONELADAS | 171.093 | 295.171 | 120.511 | 0 | 23.484 |
| TONELADAS MOVIDAS | 610.259 | | | | |
| TOTAL BARCOS | 429 | | | | |

| EXPORTACION | |
|-----------------------|--------|
| ALUMINIO | 97.704 |
| PESCADO | 56.567 |
| PORFIDOS | 14.202 |
| FRUTAS - MANZANA/PERA | 0 |
| FRUTA DEHIDRATADA | 0 |
| ZAPALLO | 0 |

| IMPORTACION | |
|-------------|---------|
| ALUMINA | 262.598 |
| BREA | 10.000 |
| OTROS | 22.573 |



EXPORTACION



IMPORTACION

MOVIMIENTO DE CONTENEDORES DEL 1er SEMESTRE 2007

| TIPO CONTENEDOR | PIES | CANT. CONT | TEUS |
|-----------------|------|--------------|--------------|
| ENTRADO | | | |
| Reefer | 20 | 155 | 155 |
| | 40 | 781 | 1.562 |
| Standard | 20 | 957 | 957 |
| | 40 | 829 | 1.658 |
| SALIDO | | | |
| Reefer | 20 | 119 | 119 |
| | 40 | 1.578 | 3.156 |
| Standard | 20 | 1.244 | 1.244 |
| | 40 | 471 | 942 |
| TOTAL | | 6.134 | 9.793 |

Jul-07

| MERCADERIA | EXPORTACION | IMPORTACION | REM.ENTRADO | REM.SALIDO | CONS.BUQUE |
|----------------------------|---------------|---------------|---------------|------------|--------------|
| ADOQUINES | 335 | | | | |
| ALGAS MARINAS | | | | | |
| ALUMINA | | 35.002 | | | |
| ALUMINIO | 10.969 | | | | |
| APAREJOS | | | | | |
| ARABIO DE ACERO | | | | | |
| ARCILLA LINGOCHEL | | | | | |
| BAÑO CRIOLITICO | | | | | |
| BLOQUES CATODICOS | | | | | |
| BREA | | | | | |
| CALAMAR | 1.644 | | 852 | | |
| CAOLIN PIEDRA | | | | | |
| CARBONATO SODIO | | 103 | | | |
| CARNES COMESTIBLES | 4 | | | | |
| CATODOS A GRANEL | | 241 | | | |
| CEMENTO | | | | | |
| CHANCHA HIERRO | | | | | |
| COKE | | | 16.078 | | |
| COMBUSTIBLES | | | | | 4.524 |
| CUERO, PELO Y GRASA ANIMAL | 128 | | | | |
| DONACIONES INTERNAC. | | | | | |
| FIBRA CERAMICA | | | | | |
| FLUORURO DE ALUMINIO | | 275 | | | |
| FRUTAS - MANZANA/PERA/NUEZ | | | | | |
| FRUTA DESHIDRATADA | | | | | |
| INSUMOS | | 1.011 | | | |
| LANA | 288 | 165 | | | |
| LANGOSTINOS | 5.232 | | 1.034 | | |
| LIGA DE ALUMINIO | | | | | |
| MAGNESIO | | 175 | | | |
| MAQUINAS Y APARATOS | | 25 | | | |
| MATERIAL EMPAQUE | | | | | |
| MATERIAL REFRACTARIO | | 383 | | | |
| MERCADERIA GENERAL | 5 | 11 | | | |
| MERLUZA | 1.743 | | 2.109 | | |
| PERTRECHOS | | | | | |
| PESCADOS MARISCOS MOLUS. | 2.308 | | 7.251 | | |
| PORFIDOS | 1.811 | | | | |
| PRODUCTOS QUIMICOS | | | | | |
| REPUESTOS | | | | | |
| SILICIO METALICO | | 573 | | | |
| SODIO CARBONADO | | | | | |
| VEHICULOS y EMBARCACIONES | | | | | |
| ZAPALLO | | | | | |
| ZINC | | | | | |
| MIEL | | | | | |
| ACERO | | 267 | | | |
| TOTAL TONELADAS | 24.467 | 38.231 | 27.324 | | 4.524 |
| TONELADAS MOVIDAS | 94.546 | | | | |
| TOTAL BARCOS | 119 | | | | |

| EXPORTACION | |
|-----------------------|--------|
| ALUMINIO | 10.969 |
| PESCADO | 10.927 |
| PORFIDOS | 2.146 |
| FRUTAS - MANZANA/PERA | 0 |
| FRUTA DEHIDRATADA | 0 |
| ZAPALLO | 0 |
| OTROS | 425 |

| IMPORTACION | |
|-------------|--------|
| ALUMINA | 35.002 |
| BREA | 0 |
| OTROS | 3.229 |

Ago-07

| MERCADERIA | EXPORTACION | IMPORTACION | REM.ENTRADO | REM.SALIDO | CONS.BUQUE |
|----------------------------|----------------|---------------|---------------|------------|--------------|
| ADOQUINES | 335 | | | | |
| ALGAS MARINAS | | | | | |
| ALUMINA | | 63.887 | | | |
| ALUMINIO | 15.859 | | | | |
| APAREJOS | | | | | |
| ARABIO DE ACERO | | | | | |
| ARCILLA LINGOCHEL | | | | | |
| BAÑO CRIOLITICO | | | | | |
| BLOQUES CATODICOS | | 99 | | | |
| BREA | | 5.000 | | | |
| CALAMAR | 1.711 | 27 | | | |
| CAOLIN PIEDRA | 200 | | | | |
| CARBONATO SODIO | | | | | |
| CARNES COMESTIBLES | 22 | | | | |
| CATODOS A GRANEL | | 127 | | | |
| CEMENTO | | | | | |
| CHANCHA HIERRO | | | | | |
| COKE | | | 13.488 | | |
| COMBUSTIBLES | | | 88 | | 4.557 |
| CUERO, PELO Y GRASA ANIMAL | 130 | 22 | | | |
| DONACIONES INTERNAC. | | | | | |
| FIBRA CERAMICA | | | | | |
| FLUORURO DE ALUMINIO | | 780 | | | |
| FRUTAS - MANZANA/PERA/NUEZ | | | | | |
| FRUTA DESHIDRATADA | 20 | | | | |
| INSUMOS | | 13 | | | |
| LANA | 308 | 21 | | | |
| LANGOSTINOS | 3.780 | | 971 | | |
| LIGA DE ALUMINIO | | 25 | | | |
| MAGNESIO | | 48 | | | |
| MAQUINAS Y APARATOS | 96 | 107 | | | |
| MATERIAL EMPAQUE | | 56 | | | |
| MATERIAL REFRACTARIO | | | | | |
| MERCADERIA GENERAL | | 45 | | | |
| MERLUZA | 857 | | 2.118 | | |
| PERTRECHOS | | 7 | | | |
| PESCADOS MARISCOS MOLUS. | 2.796 | | 3.783 | | 41 |
| PORFIDOS | 1.745 | | | | |
| PRODUCTOS QUIMICOS | | 21 | | | |
| REPUESTOS | | 12 | | | |
| SILICIO METALICO | | | | | |
| SODIO CARBONADO | | | | | |
| VEHICULOS y EMBARCACIONES | | | | | |
| ZAPALLO | | | | | |
| ZINC | | | | | |
| MIEL | | | | | |
| ACERO | | 255 | | | |
| TOTAL TONELADAS | 27.859 | 70.552 | 20.448 | 0 | 4.598 |
| TONELADAS MOVIDAS | 123.457 | | | | |
| TOTAL BARCOS | 87 | | | | |

| EXPORTACION | |
|-----------------------|--------|
| ALUMINIO | 15.859 |
| PESCADO | 9.144 |
| PORFIDOS | 2.080 |
| FRUTAS - MANZANA/PERA | 0 |
| FRUTA DEHIDRATADA | 20 |
| ZAPALLO | 0 |
| OTROS | 756 |

| IMPORTACION | |
|-------------|--------|
| ALUMINA | 63.887 |
| BREA | 5.000 |
| OTROS | 1.665 |

Sep-07

| MERCADERIA | EXPORTACION | IMPORTACION | REM.ENTRADO | REM.SALIDO | CONS.BUQUE |
|----------------------------|---------------|---------------|--------------|------------|--------------|
| ADOQUINES | 249 | | | | |
| ALGAS MARINAS | | | | | |
| ALUMINA | | 35.002 | | | |
| ALUMINIO | 10.206 | | | | |
| APAREJOS | | | | | |
| ARABIO DE ACERO | | | | | |
| ARCILLA LINGOCHEL | | | | | |
| BAÑO CRIOLITICO | | | | | |
| BLOQUES CATODICOS | | 222 | | | |
| BREA | | | | | |
| CALAMAR | 1.487 | | | | |
| CAOLIN PIEDRA | 276 | | | | |
| CARBONATO SODIO | | | | | |
| CARNES COMESTIBLES | | | | | |
| CATODOS A GRANEL | | | | | |
| CEMENTO | | | | | |
| CHANCHA HIERRO | | | | | |
| COKE | | | 5.875 | | |
| COMBUSTIBLES | | | 277 | | 1.431 |
| CUERO, PELO Y GRASA ANIMAL | 29 | 63 | | | |
| DONACIONES INTERNAC. | | | | | |
| FIBRA CERAMICA | | | | | |
| FLUORURO DE ALUMINIO | | 275 | | | |
| FRUTAS - MANZANA/PERA | | | | | |
| FRUTA DESHIDRATADA | | | | | |
| INSUMOS | | | | | |
| LANA | 111 | 19 | | | |
| LANGOSTINOS | 959 | | 207 | | |
| LIGA DE ALUMINIO | | | | | |
| MAGNESIO | | | | | |
| MAQUINAS Y APARATOS | 23 | 99 | | | |
| MATERIAL EMPAQUE | | | | | |
| MATERIAL REFRACTARIO | | 264 | | | |
| MERCADERIA GENERAL | | 13 | | | |
| MERLUZA | 1.454 | | 1.214 | | |
| PERTRECHOS | | | | | |
| PESCADOS MARISCOS MOLUS. | 1.229 | | 2.264 | | |
| PORFIDOS | 2.530 | | | | |
| PRODUCTOS QUIMICOS | | | | | |
| REPUESTOS | | | | | |
| SILICIO METALICO | | 401 | | | |
| SODIO CARBONADO | | | | | |
| VEHICULOS y EMBARCACIONES | | | | | |
| ZAPALLO | | | | | |
| ZINC | | | | | |
| MIEL | | | | | |
| ACERO | | | | | |
| TOTAL TONELADAS | 18.553 | 36.358 | 9.837 | 0 | 1.431 |
| TONELADAS MOVIDAS | 66.179 | | | | |
| TOTAL BARCOS | 63 | | | | |

| EXPORTACION | |
|-----------------------|--------|
| ALUMINIO | 10.206 |
| PESCADO | 5.129 |
| PORFIDOS | 2.779 |
| FRUTAS - MANZANA/PERA | 0 |
| FRUTA DEHIDRATADA | 0 |
| ZAPALLO | 0 |
| OTROS | 439 |

| IMPORTACION | |
|-------------|--------|
| ALUMINA | 35.002 |
| BREA | 0 |
| OTROS | 1.356 |

Oct-07

| MERCADERIA | EXPORTACION | IMPORTACION | REM.ENTRADO | REM.SALIDO | CONS.BUQUE |
|----------------------------|----------------|---------------|---------------|------------|--------------|
| ADOQUINES | 140 | | | | |
| ALGAS MARINAS | | | | | |
| ALUMINA | | 66.615 | | | |
| ALUMINIO | 15.446 | | | | |
| APAREJOS | | | | | |
| ARABIO DE ACERO | | | | | |
| ARCILLA LINGOCHEL | | | | | |
| BAÑO CRIOLITICO | | | | | |
| BLOQUES CATODICOS | | | | | |
| BREA | | 5.000 | | | |
| CALAMAR | 1.007 | | 367 | | |
| CAOLIN PIEDRA | | | | | |
| CARBONATO SODIO | | | | | |
| CARNES COMESTIBLES | | | | | |
| CATODOS A GRANEL | | 27 | | | |
| CEMENTO | | | | | |
| CHANCHA HIERRO | | | | | |
| COKE | | | 13.352 | | |
| COMBUSTIBLES | | | | | 3.803 |
| CUERO, PELO Y GRASA ANIMAL | 160 | | | | |
| DONACIONES INTERNAC. | | | | | |
| FIBRA CERAMICA | | | | | |
| FLUORURO DE ALUMINIO | | 539 | | | |
| FRUTAS - MANZANA/PERA | | | | | |
| FRUTA DESHIDRATADA | | | | | |
| INSUMOS | | 658 | | | |
| LANA | 56 | 24 | | | |
| LANGOSTINOS | 1.858 | | 262 | | |
| LIGA DE ALUMINIO | | | | | |
| MAGNESIO | | 190 | | | |
| MAQUINAS Y APARATOS | | 90 | | | |
| MATERIAL EMPAQUE | | | | | |
| MATERIAL REFRACTARIO | | 382 | | | |
| MERCADERIA GENERAL | | 68 | | | |
| MERLUZA | 850 | | 3.580 | | |
| PERTRECHOS | | 22 | | | |
| PESCADOS MARISCOS MOLUS. | 2.649 | | 2.552 | | |
| PORFIDOS | 3.983 | | | | |
| PRODUCTOS QUIMICOS | | | | | |
| REPUESTOS | | | | | |
| SILICIO METALICO | | 101 | | | |
| SODIO CARBONADO | | | | | |
| VEHICULOS y EMBARCACIONES | | | | | |
| ZAPALLO | | | | | |
| ZINC | | | | | |
| MIEL | | | | | |
| ACERO | | 96 | | | |
| TOTAL TONELADAS | 26.149 | 73.812 | 20.113 | 0 | 3.803 |
| TONELADAS MOVIDAS | 123.877 | | | | |
| TOTAL BARCOS | 69 | | | | |

| EXPORTACION | |
|-----------------------|--------|
| ALUMINIO | 15.446 |
| PESCADO | 6.364 |
| PORFIDOS | 4.123 |
| FRUTAS - MANZANA/PERA | 0 |
| FRUTA DEHIDRATADA | 0 |
| ZAPALLO | 0 |
| OTROS | 216 |

| IMPORTACION | |
|-------------|--------|
| ALUMINA | 66.615 |
| BREA | 5.000 |
| OTROS | 2.197 |

Nov-07

| MERCADERIA | EXPORTACION | IMPORTACION | REM.ENTRADO | REM.SALIDO | CONS.BUQUE |
|----------------------------|---------------|---------------|---------------|------------|--------------|
| ADOQUINES | 196 | | | | |
| ALGAS MARINAS | | | | | |
| ALUMINA | | 33.490 | | | |
| ALUMINIO | 10.604 | 23 | | | |
| APAREJOS | | | | | |
| ARABIO DE ACERO | | | | | |
| ARCILLA LINGOCHEL | | | | | |
| BAÑO CRIOLITICO | | | | | |
| BLOQUES CATODICOS | | 85 | | | |
| BREA | | | | | |
| CALAMAR | 1.052 | | | | |
| CAOLIN PIEDRA | 376 | | | | |
| CARBONATO SODIO | | | | | |
| CARNES COMESTIBLES | | 42 | | | |
| CATODOS A GRANEL | | | | | |
| CEMENTO | | | | | |
| CHANCHA HIERRO | | | | | |
| COKE | | | 15.318 | | |
| COMBUSTIBLES | | | | | 2.143 |
| CUERO, PELO Y GRASA ANIMAL | 188 | | | | |
| DONACIONES INTERNAC. | | | | | |
| FIBRA CERAMICA | | | | | |
| FLUORURO DE ALUMINIO | | 527 | | | |
| FRUTAS - MANZANA/PERA | | | | | |
| FRUTA DESHIDRATADA | | | | | |
| INSUMOS | | 261 | | | |
| LANA | 148 | 40 | | | |
| LANGOSTINOS | 479 | 41 | 79 | | |
| LIGA DE ALUMINIO | | | | | |
| MAGNESIO | | 47 | | | |
| MAQUINAS Y APARATOS | 4 | 178 | | | |
| MATERIAL EMPAQUE | | 9 | | | |
| MATERIAL REFRACTARIO | | 170 | | | |
| MERCADERIA GENERAL | | | | | |
| MERLUZA | 1.136 | | 1.280 | | |
| PERTRECHOS | | | | | |
| PESCADOS MARISCOS MOLUS. | 1.833 | | 2.071 | | |
| PORFIDOS | 2.586 | | | | |
| PRODUCTOS QUIMICOS | | | | | |
| REPUESTOS | | 23 | | | |
| SILICIO METALICO | | 903 | | | |
| SODIO CARBONADO | | 87 | | | |
| VEHICULOS y EMBARCACIONES | | | | | |
| ZAPALLO | | | | | |
| ZINC | | | | | |
| MIEL | | | | | |
| ACERO | | 50 | | | |
| TOTAL TONELADAS | 18.602 | 35.976 | 18.748 | 0 | 2.143 |
| TONELADAS MOVIDAS | 75.469 | | | | |
| TOTAL BARCOS | 45 | | | | |

| EXPORTACION | |
|-----------------------|--------|
| ALUMINIO | 10.604 |
| PESCADO | 4.500 |
| PORFIDOS | 2.782 |
| FRUTAS - MANZANA/PERA | 0 |
| FRUTA DEHIDRATADA | 0 |
| ZAPALLO | 0 |
| OTROS | 716 |

| IMPORTACION | |
|-------------|--------|
| ALUMINA | 33.490 |
| BREA | 0 |
| OTROS | 2.486 |

Dic-07

| MERCADERIA | EXPORTACION | IMPORTACION | REM.ENTRADO | REM.SALIDO | CONS.BUQUE |
|----------------------------|---------------|---------------|---------------|------------|--------------|
| ADOQUINES | 385 | | | | |
| ALGAS MARINAS | | | | | |
| ALUMINA | | 31.314 | | | |
| ALUMINIO | 12.072 | 25 | | | |
| APAREJOS | | | | | |
| ARABIO DE ACERO | | | | | |
| ARCILLA LINGOCHEL | | | | | |
| BAÑO CRIOLITICO | | | | | |
| BLOQUES CATODICOS | | 748 | | | |
| BREA | | 5.000 | | | |
| CALAMAR | 924 | | | | |
| CAOLIN PIEDRA | | | | | |
| CARBONATO SODIO | | | | | |
| CARNES COMESTIBLES | | | | | |
| CATODOS A GRANEL | | 59 | | | |
| CEMENTO | | | | | |
| CHANCHA HIERRO | | | | | |
| COKE | | | 18.960 | | |
| COMBUSTIBLES | | | | | 2.971 |
| CUERO, PELO Y GRASA ANIMAL | 124 | | | | |
| DONACIONES INTERNAC. | | | | | |
| FIBRA CERAMICA | | | | | |
| FLUORURO DE ALUMINIO | | 781 | | | |
| FRUTAS - MANZANA/PERA | | | | | |
| FRUTA DESHIDRATADA | | | | | |
| INSUMOS | | 2 | | | |
| LANA | | 96 | | | |
| LANGOSTINOS | 593 | | 138 | | |
| LIGA DE ALUMINIO | | 71 | | | |
| MAGNESIO | | | | | |
| MAQUINAS Y APARATOS | | | | | |
| MATERIAL EMPAQUE | | | | | |
| MATERIAL REFRACTARIO | | 64 | | | |
| MERCADERIA GENERAL | | | | | |
| MERLUZA | 831 | | 1.732 | | |
| PERTRECHOS | | 52 | | | |
| PESCADOS MARISCOS MOLUS. | 2.698 | | 2.333 | | |
| PORFIDOS | 1.828 | | | | |
| PRODUCTOS QUIMICOS | | | | | |
| REPUESTOS | | 6 | | | |
| SILICIO METALICO | | | | | |
| SODIO CARBONADO | | 25 | | | |
| VEHICULOS y EMBARCACIONES | | | | | |
| ZAPALLO | | | | | |
| ZINC | | | | | |
| MIEL | | | | | |
| ACERO | | | | | |
| TOTAL TONELADAS | 19.455 | 38.243 | 23.163 | 0 | 2.971 |
| TONELADAS MOVIDAS | 83.832 | | | | |
| TOTAL BARCOS | 43 | | | | |

| EXPORTACION | |
|-----------------------|--------|
| ALUMINIO | 12.072 |
| PESCADO | 5.046 |
| PORFIDOS | 2.213 |
| FRUTAS - MANZANA/PERA | 0 |
| FRUTA DEHIDRATADA | 0 |
| ZAPALLO | 0 |
| OTROS | 124 |

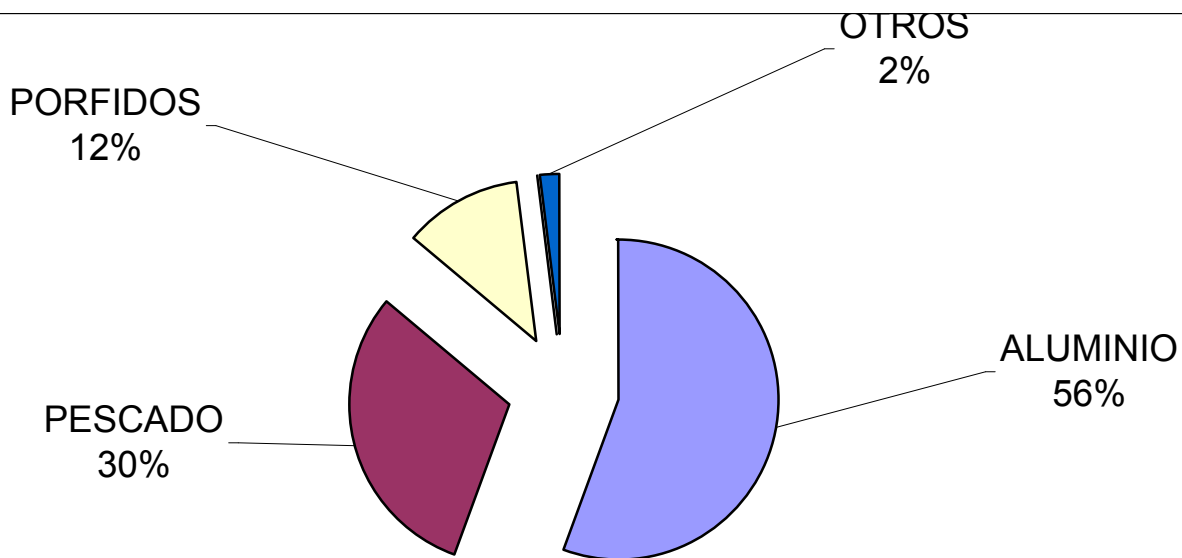
| IMPORTACION | |
|-------------|--------|
| ALUMINA | 31.314 |
| BREA | 5.000 |
| OTROS | 1.929 |

Subtotal - 2do. Semestre 2007

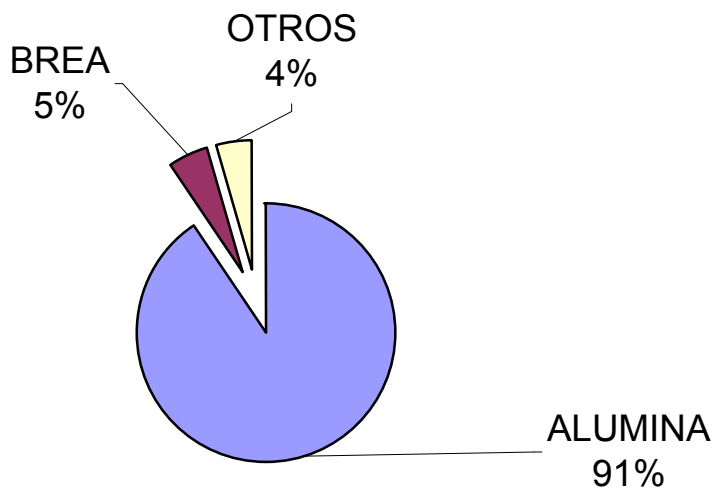
| MERCADERIA | EXPORTACION | IMPORTACION | REM.ENTRADO | REM.SALIDO | CONS.BUQUE |
|---------------------------|----------------|----------------|----------------|------------|---------------|
| ADOQUINES | 1.640 | 0 | 0 | 0 | 0 |
| ALGAS MARINAS | 0 | 0 | 0 | 0 | 0 |
| ALUMINA | 0 | 265.310 | 0 | 0 | 0 |
| ALUMINIO | 75.156 | 48 | 0 | 0 | 0 |
| APAREJOS | 0 | 0 | 0 | 0 | 0 |
| ARABIO DE ACERO | 0 | 0 | 0 | 0 | 0 |
| ARCILLA LINGOCHEL | 0 | 0 | 0 | 0 | 0 |
| BAÑO CRIOLITICO | 0 | 0 | 0 | 0 | 0 |
| BLOQUES CATODICOS | 0 | 1.154 | 0 | 0 | 0 |
| BREA | 0 | 15.000 | 0 | 0 | 0 |
| CALAMAR | 7.825 | 27 | 1.219 | 0 | 0 |
| CAOLIN PIEDRA | 852 | 0 | 0 | 0 | 0 |
| CARBONATO SODIO | 0 | 103 | 0 | 0 | 0 |
| CARNES COMESTIBLES | 26 | 42 | 0 | 0 | 0 |
| CATODOS A GRANEL | 0 | 454 | 0 | 0 | 0 |
| CEMENTO | 0 | 0 | 0 | 0 | 0 |
| CHANCHA HIERRO | 0 | 0 | 0 | 0 | 0 |
| COKE | 0 | 0 | 83.071 | 0 | 0 |
| COMBUSTIBLES | 0 | 0 | 365 | 0 | 19.429 |
| CUEROS y GRASA ANIMAL | 759 | 85 | 0 | 0 | 0 |
| DONACIONES INTERNAC. | 0 | 0 | 0 | 0 | 0 |
| FIBRA CERAMICA | 0 | 0 | 0 | 0 | 0 |
| FLUORURO DE ALUMINIO | 0 | 3.177 | 0 | 0 | 0 |
| FRUTAS - MANZANA/PERA | 0 | 0 | 0 | 0 | 0 |
| FRUTA DESHIDRATADA | 20 | 0 | 0 | 0 | 0 |
| INSUMOS | 0 | 1.945 | 0 | 0 | 0 |
| LANA | 911 | 365 | 0 | 0 | 0 |
| LANGOSTINOS | 12.901 | 41 | 2.691 | 0 | 0 |
| LIGA DE ALUMINIO | 0 | 96 | 0 | 0 | 0 |
| MAGNESIO | 0 | 460 | 0 | 0 | 0 |
| MAQUINAS Y APARATOS | 123 | 499 | 0 | 0 | 0 |
| MATERIAL EMPAQUE | 0 | 65 | 0 | 0 | 0 |
| MATERIAL REFRACTARIO | 0 | 1.263 | 0 | 0 | 0 |
| MERCADERIA GENERAL | 5 | 137 | 0 | 0 | 0 |
| MERLUZA | 6.871 | 0 | 12.033 | 0 | 0 |
| PERTRECHOS | 0 | 81 | 0 | 0 | 0 |
| PESCADOS MARISCOS MOLUS. | 13.513 | 0 | 20.254 | 0 | 41 |
| PORFIDOS | 14.483 | 0 | 0 | 0 | 0 |
| PRODUCTOS QUIMICOS | 0 | 21 | 0 | 0 | 0 |
| REPUESTOS | 0 | 41 | 0 | 0 | 0 |
| SILICIO METALICO | 0 | 1.978 | 0 | 0 | 0 |
| SODIO CARBONADO | 0 | 112 | 0 | 0 | 0 |
| VEHICULOS y EMBARCACIONES | 0 | 0 | 0 | 0 | 0 |
| ZAPALLO | 0 | 0 | 0 | 0 | 0 |
| ZINC | 0 | 0 | 0 | 0 | 0 |
| MIEL | 0 | 0 | 0 | 0 | 0 |
| ACERO | 0 | 668 | 0 | 0 | 0 |
| TOTAL TONELADAS | 135.085 | 293.172 | 119.633 | 0 | 19.470 |
| TONELADAS MOVIDAS | 567.360 | | | | |
| TOTAL BARCOS | 426 | | | | |

| EXPORTACION | |
|-----------------------|--------|
| ALUMINIO | 75.156 |
| PESCADO | 41.110 |
| PORFIDOS | 16.123 |
| FRUTAS - MANZANA/PERA | 0 |
| FRUTA DEHIDRATADA | 20 |
| ZAPALLO | 0 |

| IMPORTACION | |
|-------------|---------|
| ALUMINA | 265.310 |
| BREA | 15.000 |
| OTROS | 12.862 |



EXPORTACION



IMPORTACION

MOVIMIENTO DE CONTENEDORES DEL 2do SEMESTRE 2007

| TIPO CONTENEDOR | PIES | CANT. CONT | TEUS |
|------------------------|-------------|-------------------|---------------|
| ENTRADO | | | |
| Reefer | 20 | 418 | 418 |
| | 40 | 1.174 | 2.348 |
| Standard | 20 | 916 | 916 |
| | 40 | 915 | 1.830 |
| Flat Rack | 40 | 8 | 16 |
| Open Top | 40 | 1 | 2 |
| SALIDO | | | |
| Reefer | 20 | 128 | 128 |
| | 40 | 1.364 | 2.728 |
| Standard | 20 | 1.725 | 1.725 |
| | 40 | 452 | 904 |
| TOTAL | | 7.101 | 11.015 |