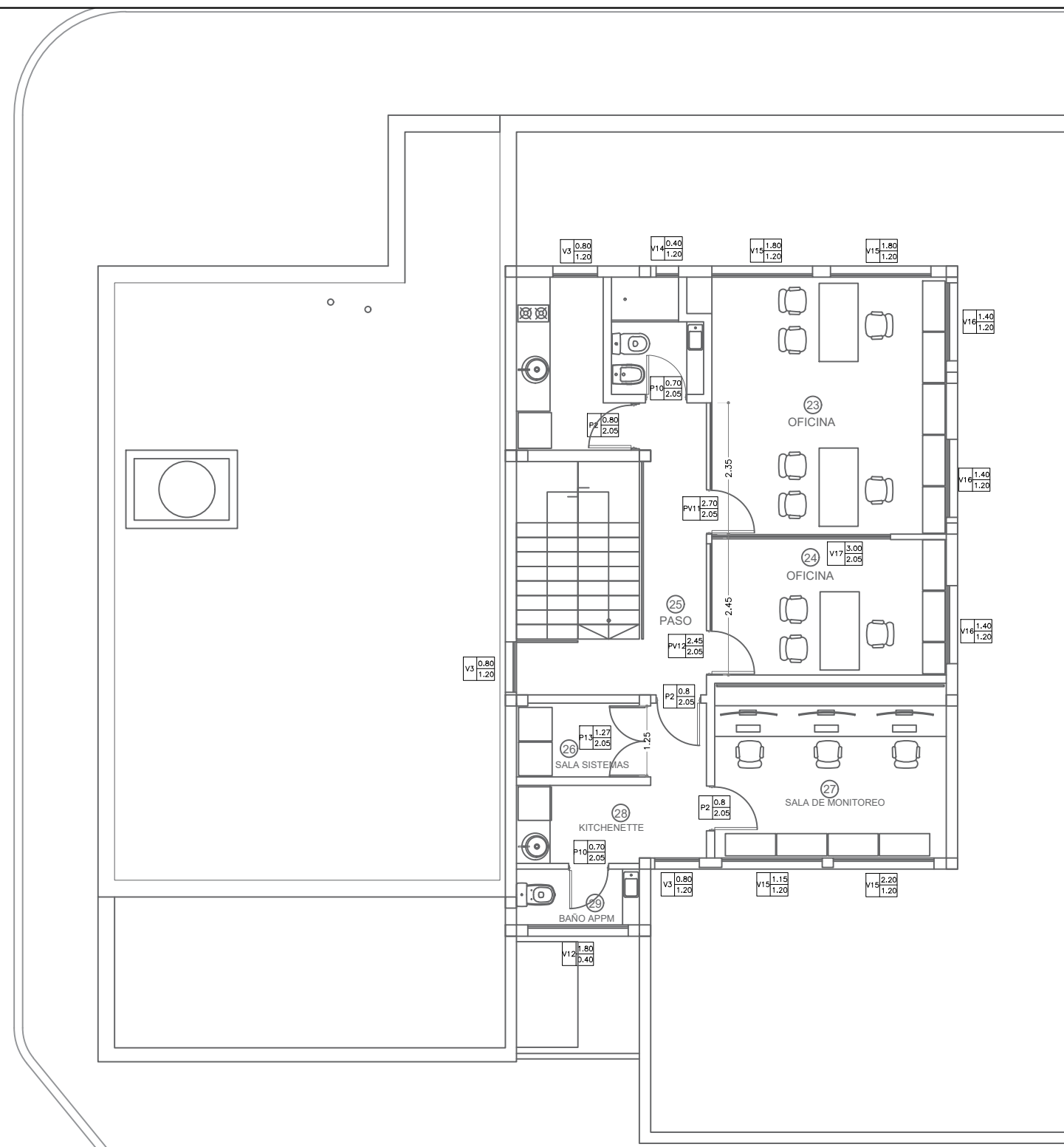
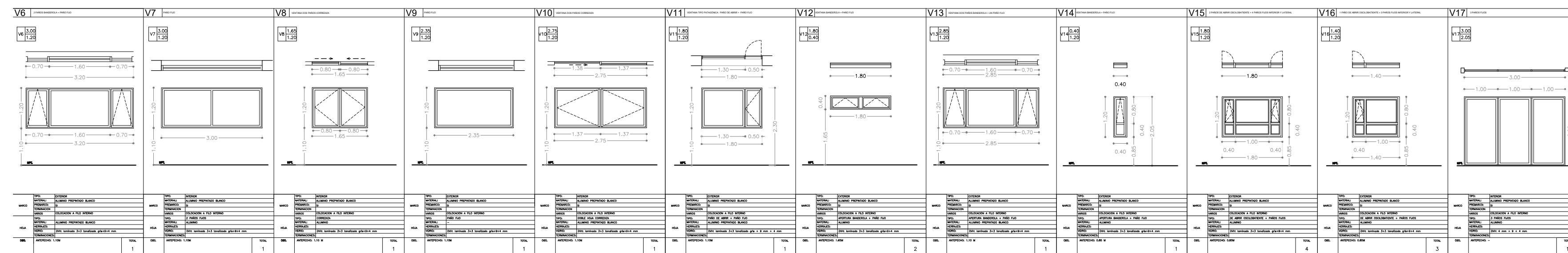
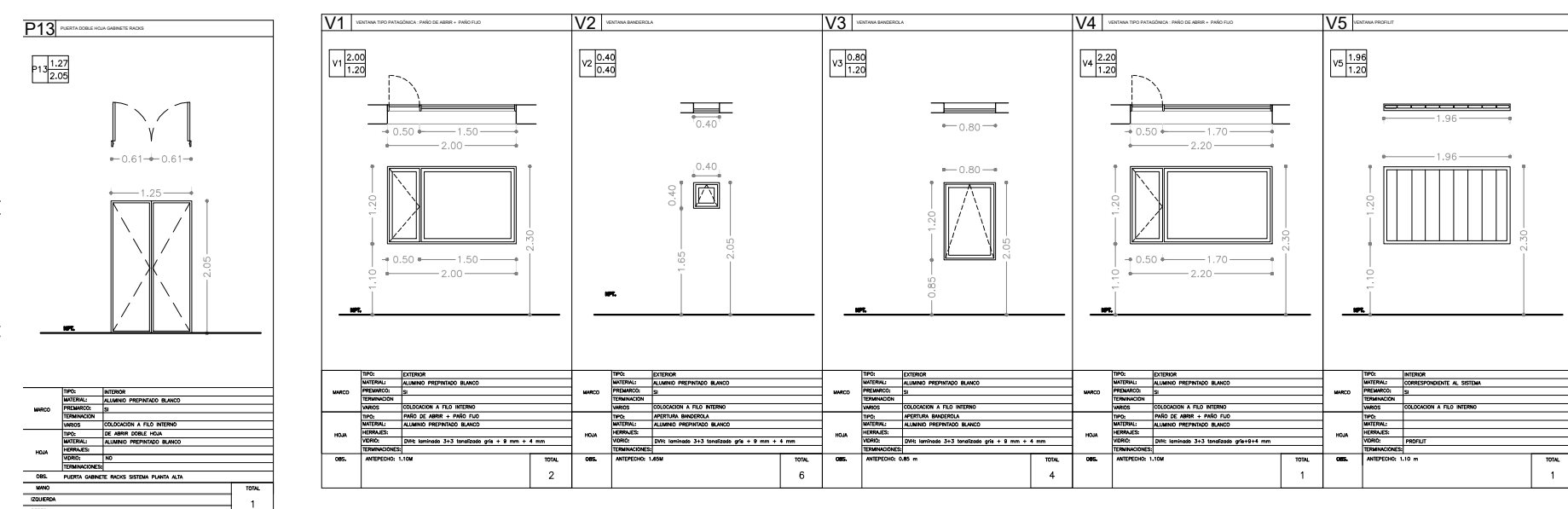
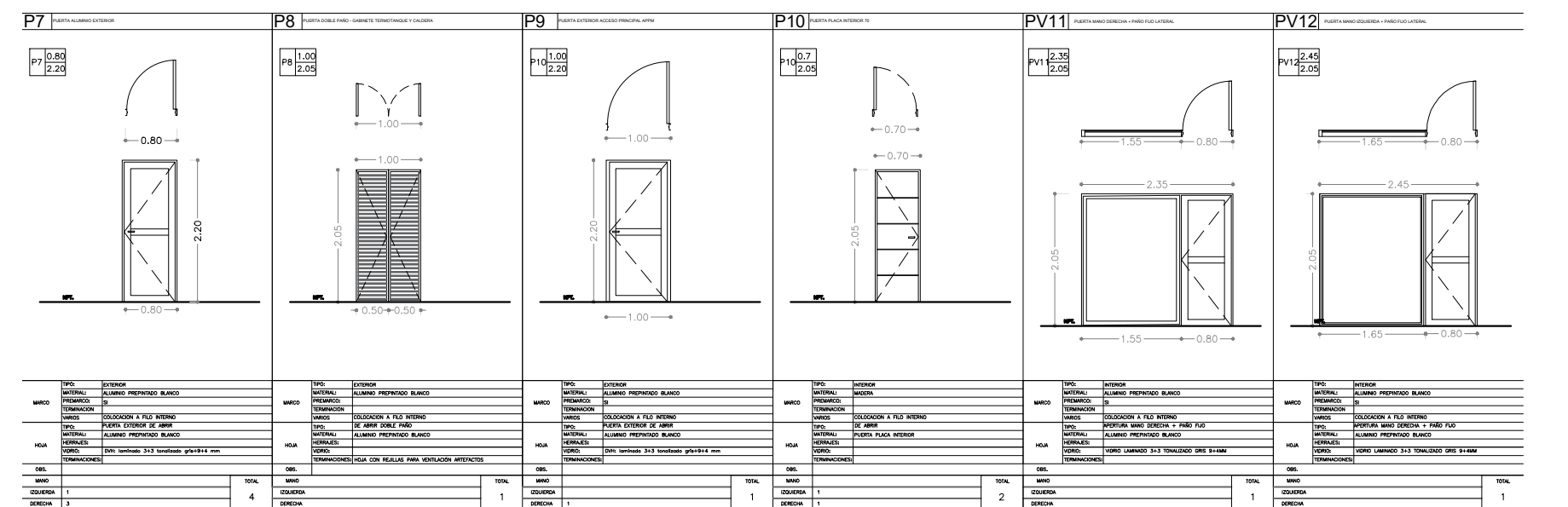
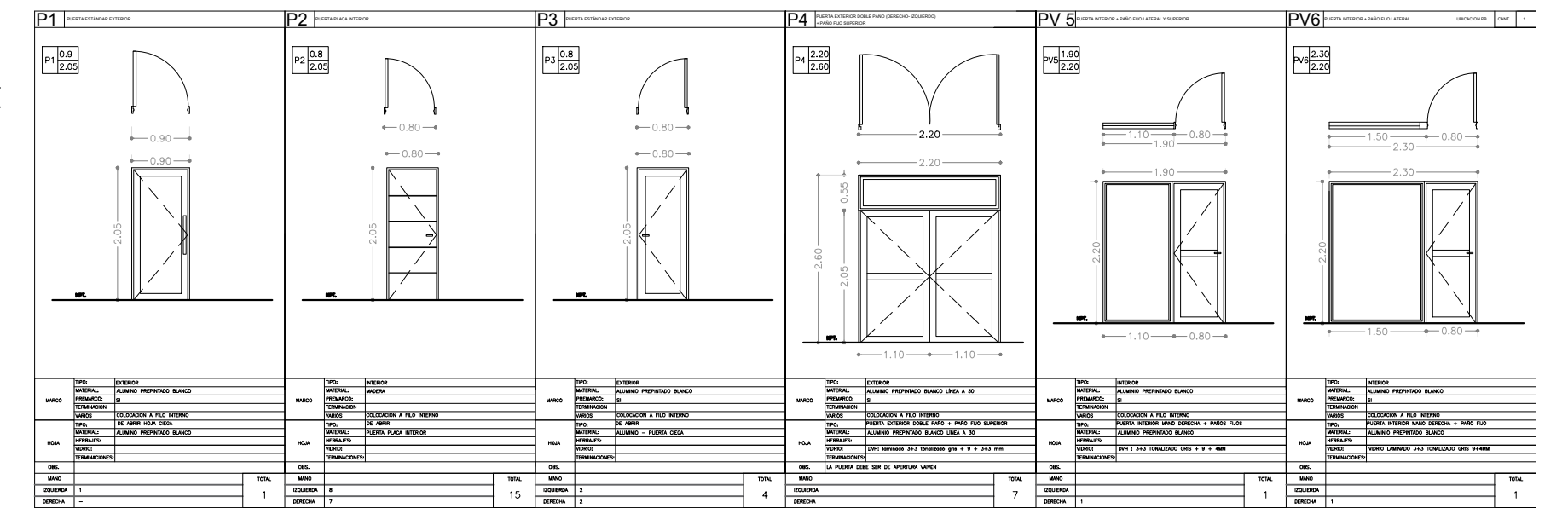


PLANTA BAJA
ESC. 1:100



PLANTA ALTA
ESC. 1:100



PLANO: CARPINTERÍAS ALUMINIO
NUEVO CONTROL DE ACCESO ZONA PRIMARIA - MUELLE ALMIRANTE STORNI

ESCALA: sin esc.

ADMINISTRACIÓN PORTUARIA
PUERTO MADRYN

FECHA: 2024
NOMBRE: Arq. Araceli Morrás

Nº 09

Dibujó: []
Revisó: []
Aprobó: []